

Finisher-E1

PARTS CATALOG

REVISION 0

[F25 - 2401 ZRZ00001 -]

Canon

FEB. 1999

FY8-31E4-000

PREFACE

This Parts Catalog contains listings of parts used in the Canon Finisher-E1. Diagrams are provided with the listings to aid the service technician in identifying clearly, the item to be orderd.

Whenever ordering parts, consult this Parts Catalog for all of the information pertaining to each item. Be sure to include, in the Parts Request, the full item description, the item part number, and the quantity.

Canon Inc.

Office Imaging Products Technical Support Div.
5-1, Hakusan 7-chome,
Toride-shi, Ibaraki 302-8501, Japan

COPYRIGHT © 1999 CANON INC.

Printed in Japan

Imprimé au Japon

Use of this manual should be strictly supervised to avoid disclosure of confidential information.

CONTENTS

QA. ASSEMBLY LOCATION DIAGRAM

Q01. MOUNTING HARDWARE

Q10. EXTERNAL COVERS, PANELS, ETC.

Q11. INTERNAL COMPONENTS 1

Q12. INTERNAL COMPONENTS 2

Q13. INTERNAL COMPONENTS 3

Q20. STACK TRAY DRIVE ASSEMBLY

Q30. OPERATING TRAY ASSEMBLY

Q35. PAPER HEIGHT SENSOR ASSEMBLY

Q40. STAPLE ASSEMBLY

QB. LIST OF CONNECTORS

C. LIST OF STANDARD FASTENERS

QD. NUMERICAL INDEX

FIGURE QA ASSEMBLY LOCATION DIAGRAM

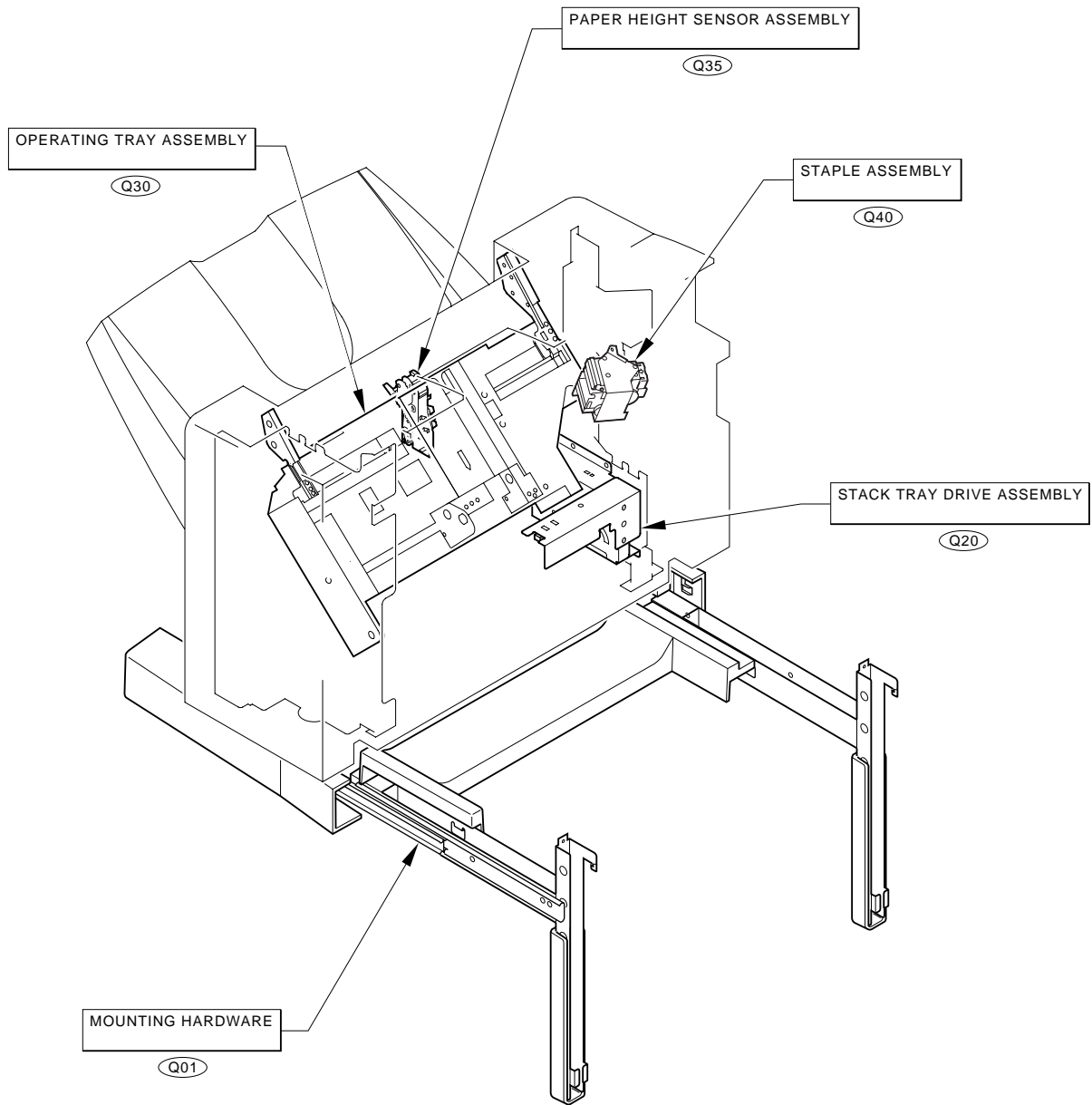


FIGURE Q01

MOUNTING HARDWARE

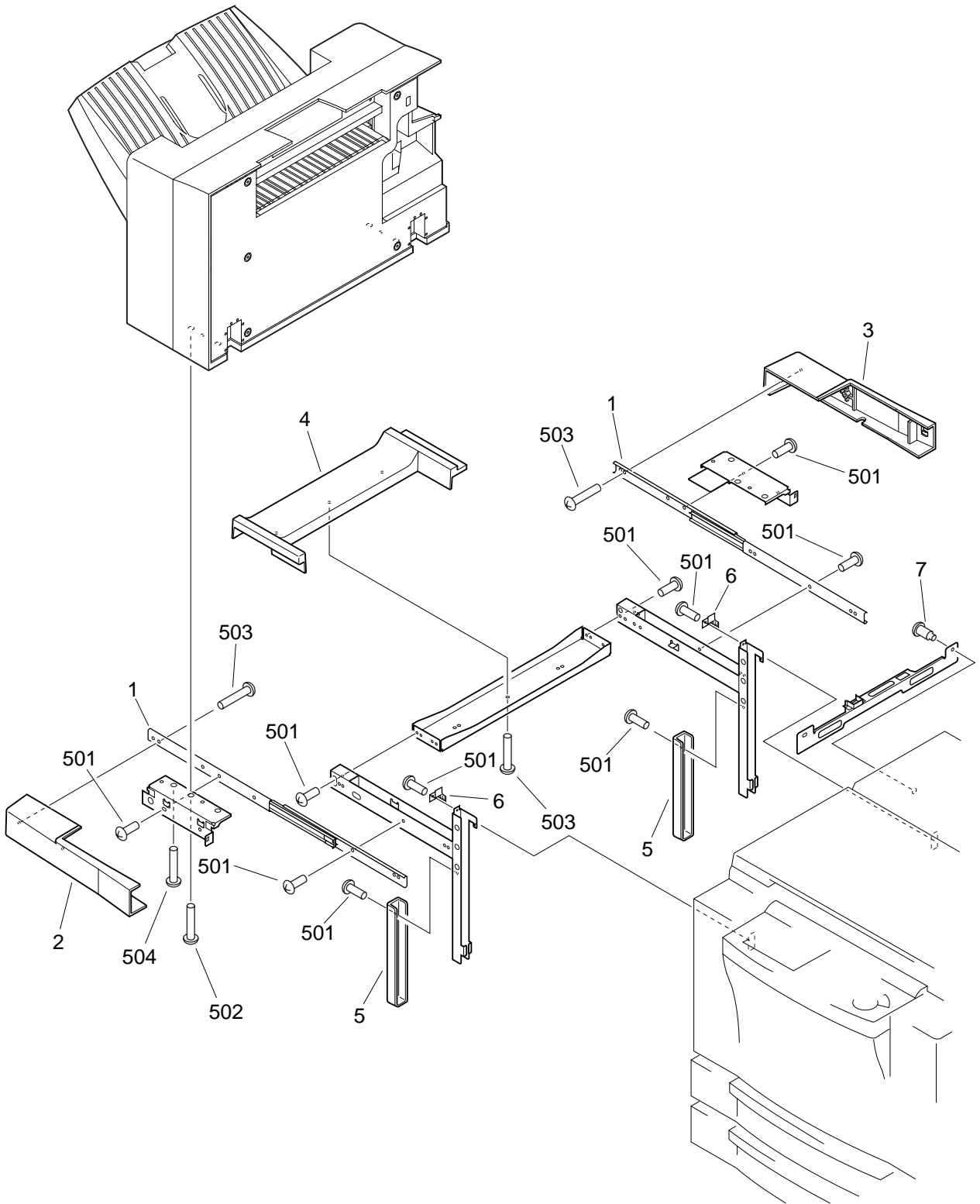


FIGURE & KEY NO.	PART NUMBER	RANK	QTY	DESCRIPTION	SERIAL NUMBER / REMARKS
Q01 -	NPN		RF	MOUNTING HARDWARE	
1	FB5-0745-000		2	RAIL, SLIDE	
2	FB5-0752-000		1	COVER, KIT, FRONT	
3	FB5-0753-000		1	COVER, KIT, REAR	
4	FB5-0754-000		1	COVER, KIT CROSSMEMBER	
5	FB5-0755-000		2	COVER, KIT, LOWER	
6	FB5-0756-000		2	CLAW, KIT FIXING	
7	FS1-9168-000		2	SCREW, STEPPED, M4X5	
501	XB1-2400-606		AR	SCREW, MACH., TRUSS HEAD, M4X6	
502	XB1-2402-509		4	SCREW, MACH., TRUSS HEAD, M4X25	
503	XB4-7401-009		AR	SCREW, TAPPING, TRUSS HEAD, M4X10	
504	XB1-2402-009		1	SCREW, MACH., TRUSS HEAD, M4X20	

FIGURE & KEY NO.	PART NUMBER	R A N K	Q T Y	DESCRIPTION	SERIAL NUMBER / REMARKS
Q10 -	NPN		RF	EXTERNAL COVERS, PANELS, ETC.	
1	FB5-0577-000		1	FRAME	
2	FB5-0582-000		1	GUIDE, COLLAR, FRONT	
3	FB5-0583-000		1	GUIDE, COLLAR, REAR	
4	FB5-0600-000		1	PANEL, RIGHT	
5	FB5-0601-000		1	PANEL, REAR	
6	FB5-0675-000		1	COVER, STAPLE INTERNAL	
7	FB5-0701-000		1	GUIDE, 1	
8	FB5-0702-000		1	GUIDE, 2	
9	FF5-9185-000		1	PLATE, TRAY SUPPORT, FRONT	
10	FF5-9186-000		1	PLATE, TRAY SUPPORT, REAR	
11	FB5-0658-000		1	STACK TRAY, 1	
12	FB5-0659-000		1	STACK TRAY, 2	
13	FS7-2242-000		2	SPRING, TENSION	
14	WG8-5362-000		1	IC, TLP1241, PHOTO-INTERRUPTER	S11 J702
15	FB5-0593-000		1	HANDLE	
16	FB5-0594-000		1	MOUNT, HANDLE	
17	FS7-2246-000		1	SPRING, COMPRESSION	
18	XD9-0117-000		1	RING,E	
19	FA6-8379-000		1	ARM, SENSOR, 2	
20	FB5-0662-000		1	COVER, SENSOR	
21	FA5-4471-000		1	SPRING, TORSION	
22	FG3-0281-000		1	CABLE, STACK TRAY CONNECTING	J701,702
23	FB5-0703-000		1	GUIDE, 3	
24	FB5-0704-000		1	GUIDE, 4	
25	FB5-0655-000		2	PLATE, GROUNDING	
501	XB1-2400-606		AR	SCREW,MACH.,TRUSS HEAD,M4X6	
502	XB2-7300-606		AR	SCREW,W/WASHER,M3X6	
503	XB2-7400-606		AR	SCREW,W/WASHER,M4X6	
504	XB4-7300-809		AR	SCREW,TAPPING,TRUSS HEAD,M3X8	

FIGURE & KEY NO.	PART NUMBER	R A N K	Q T Y	DESCRIPTION	SERIAL NUMBER / REMARKS
Q10 - 505	XB4-7400-809		AR	SCREW,TAPPING,TRUSS HEAD,M4X8	
506	XB4-7401-209		AR	SCREW,TAPPING,TRUSS HEAD,M4X12	
507	XD2-1100-242		1	RING,E	

FIGURE Q11

INTERNAL COMPONENTS 1

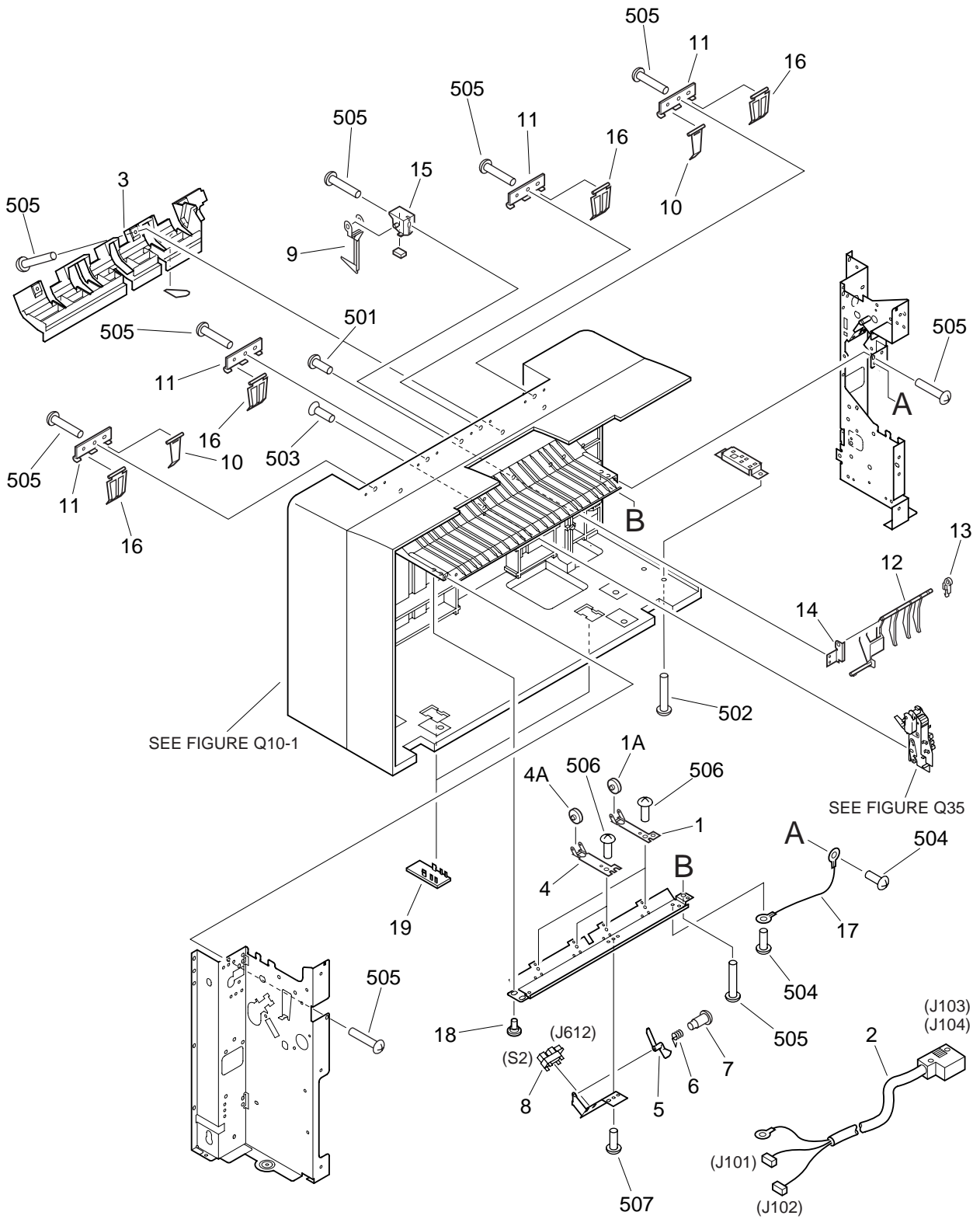


FIGURE & KEY NO.	PART NUMBER	R A N K	Q T Y	DESCRIPTION	SERIAL NUMBER / REMARKS
Q11 -	NPN		RF	INTERNAL COMPONENTS 1	
1	FF5-9200-000		2	HOLDER, FEED ROLLER	
1A	FB5-0735-000		1	ROLLER, FEED	
2	FG3-0275-000		1	CABLE, INTERFACE CONNECTING	J101-104
3	FF5-9193-000		1	GUIDE, LOWER	
4	FF5-9192-000		2	HOLDER, FEED ROLLER	
4A	FB5-0735-000		1	ROLLER, FEED	
5	FB5-0736-000		1	FLAG, FEED SENSOR	
6	FB5-0738-000		1	SPRING, TORSION	
7	FE9-0018-000		1	SCREW, STEPPED, M3	
8	WG8-5362-000		1	IC, TLP1241, PHOTO-INTERRUPTER	S2 J612
9	FB5-0595-000		1	PLATE, END, A	
10	FB5-0596-000		2	PLATE, END, B	
11	FB5-0598-000		4	SUPPORT, END PLATE, B	
12	FB5-0697-000		1	FLAG, PAPER SENSOR, 2	
13	FB5-0698-000		1	MOUNT, FLAG SUPPORT	
14	FB5-0699-000		1	PLATE, FLAG SUPPORT	
15	FF5-9195-000		1	HOLDER, END PLATE, A	
16	FB5-0684-000		4	PLATE, END, C	
17	FF3-3664-000		1	CABLE, GROUNDING	
18	FS5-9597-000		2	SCREW, STEPPED	
19	FB4-6261-000		2	COVER, BLANKING	
501	XB1-2300-606		AR	SCREW, MACH., TRUSS HEAD, M3X6	
502	XB1-2401-609		2	SCREW, MACH., TRUSS HEAD, M4X16	
503	XB1-3300-806		AR	SCREW, MACH., C.S. HEAD, M3X8	
504	XB2-7400-606		AR	SCREW, W/WASHER, M4X6	
505	XB4-7401-209		AR	SCREW, TAPPING, TRUSS HEAD, M4X12	
506	XB6-7400-409		4	SCREW, TP, M4X4	
507	XB6-7400-609		1	SCREW, TP, M4X6	

FIGURE Q12

INTERNAL COMPONENTS 2

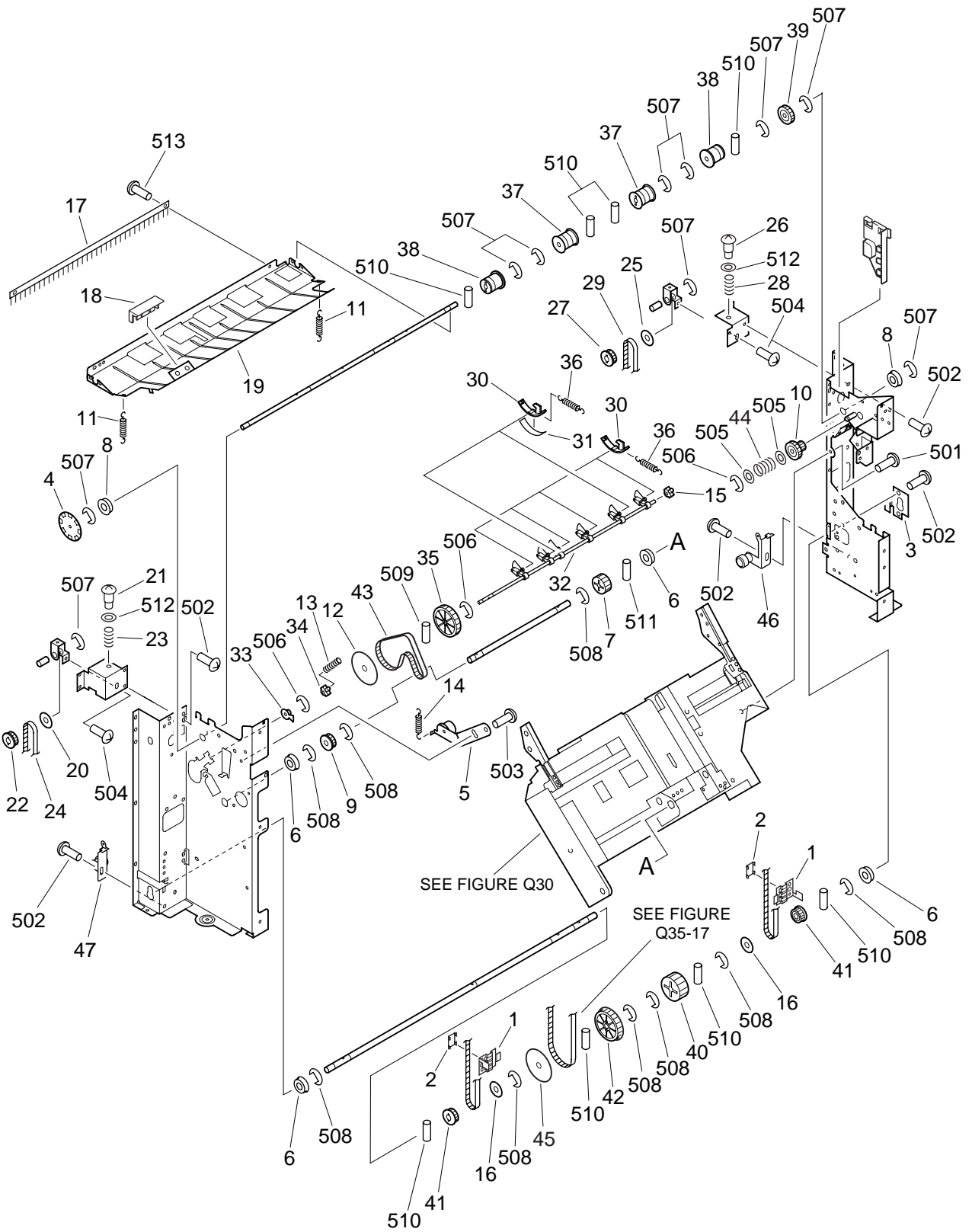


FIGURE & KEY NO.	PART NUMBER	R A N K	Q T Y	DESCRIPTION	SERIAL NUMBER / REMARKS
Q12 -	NPN		RF	INTERNAL COMPONENTS 2	
1	FB5-0584-000		2	PLATE, BELT BRACKET	
2	FB5-0585-000		2	PLATE, BELT SUPPORT	
3	FB5-0586-000		1	PLATE, STOP	
4	FB5-0589-000		1	PLATE, CLOCK	
5	FF5-9173-000		1	PLATE, TENSION	
6	RS1-1054-000		4	BUSHING	
7	FS2-0145-000		1	GEAR, 23T	
8	FS2-1608-000		2	BUSHING	
9	FS2-3488-000		1	PULLEY, 32T	
10	FS7-0487-000		1	GEAR, 24T/23T	
11	FS7-2241-000		2	SPRING, TENSION	
12	FS5-6709-000		1	FLANGE	
13	FS7-2255-000		1	SPRING, COMPRESSION	
14	FS7-2256-000		1	SPRING, TENSION	
15	FB5-0654-000		1	BUSHING	
16	FB1-9860-000		2	FLANGE	
17	FB5-0590-000		1	ELIMINATOR, STATIC CHARGE	
18	FB5-0729-000		1	HANDLE, UPPER GUIDE	
19	FF5-9183-000		1	GUIDE, UPPER	
20	FB1-9860-000		1	FLANGE	
21	FS1-9167-000		1	SCREW, STEPPED, M4	
22	FS5-3764-000		1	PULLEY, 20T	
23	FS7-2243-000		1	SPRING, COMPRESSION	
24	XF2-1318-860		1	BELT, TIMING	
25	FB1-9860-000		1	FLANGE	
26	FS1-9167-000		1	SCREW, STEPPED, M4	
27	FS5-3764-000		1	PULLEY, 20T	
28	FS7-2243-000		1	SPRING, COMPRESSION	
29	XF2-1318-860		1	BELT, TIMING	

FIGURE & KEY NO.	PART NUMBER	R A N K	Q T Y	DESCRIPTION	SERIAL NUMBER / REMARKS
Q12 - 30	FB5-0652-000		6	ROLLER	
31	FB5-0653-000		2	SHEET, ROLLER	
32	FB5-0650-000		1	SHAFT, ROLLER	
33	FB5-0651-000		1	FLAG, ROLLER SENSOR	
34	FB5-0654-000		1	BUSHING	
35	FS5-3768-000		1	PULLEY, 64T	
36	FS7-2254-000		6	SPRING, TENSION	
37	FB5-0730-000		2	ROLLER, FEED, A	
38	FB5-0731-000		2	ROLLER, FEED, B	
39	FS7-0499-000		1	GEAR, 23T	
40	FS7-0486-000		1	GEAR, 42T	
41	FS5-3764-000		2	PULLEY, 20T	
42	FS5-3765-000		1	PULLEY, 45T	
43	XF9-0423-000		1	FLAT BELT, TIMING, 170T	
44	FS7-2257-000		1	SPRING, COMPRESSION	
45	FS5-6709-000		1	FLANGE	
46	FF5-9201-000		1	PLATE, COLLAR SUPPORT, REAR	
47	FF5-9202-000		1	PLATE, COLLAR SUPPORT, FRONT	
501	XB1-2400-606		AR	SCREW,MACH.,TRUSS HEAD,M4X6	
502	XB1-2400-609		AR	SCREW,MACH.,TRUSS HEAD,M4X6	
503	XB6-7300-609		AR	SCREW,TP,M3X6	
504	XB1-2400-409		AR	SCREW,MACH.,TRUSS HEAD,M4X4	
505	XD1-1104-135		2	SHIM	
506	XD2-1100-322		AR	RING,E	
507	XD2-1100-502		AR	RING,E	
508	XD2-1100-642		AR	RING,E	
509	XD3-2160-102		1	PIN,DOWEL	
510	XD3-2200-102		AR	PIN,DOWEL	
511	XD3-2200-142		AR	PIN,DOWEL	
512	XD1-1106-239		2	SHIM	

FIGURE & KEY NO.	PART NUMBER	R A N K	Q T Y	DESCRIPTION	SERIAL NUMBER / REMARKS
Q12 - 513	XB1-2300-607		2	SCREW,MACH.,TRUSS HEAD,M3X6	

FIGURE & KEY NO.	PART NUMBER	RANK	QTY	DESCRIPTION	SERIAL NUMBER / REMARKS
Q13 -	NPN		RF	INTERNAL COMPONENTS 3	
1	FB5-0740-000		1	FLAG, JOINT SWITCH	
2	FH6-1667-000		1	MOTOR, STEPPING, DC 4.8W	M1 J4
3	FH6-1669-000		1	MOTOR, STEPPING, DC 2.46W	M2 J202
4	WG8-5362-000		4	IC, TLP1241, PHOTO-INTERRUPTER	S1,3,12,13 J602,603,607,608
5	FG3-0274-000		1	DC CONTROLLER PCB ASSEMBLY	
6	FG3-0276-000		1	CABLE, MOTOR CONNECTING	J201,202
7	FG3-0280-000		1	CABLE, FRAME	J601-612
8	FG3-0282-000		1	CABLE, SAFETY SWITCH	J801 SLV1
9	FB5-0722-000		1	GUIDE, STAPLE	
10	FS2-9461-000		1	SCREW, STEPPED, M3	
11	FS7-2245-000		1	SPRING, TENSION	
12	WC4-5030-000		1	MICROSWITCH	S14 SLV1
13	FS1-9121-000		1	SCREW, STEPPED, M3X3	
14	WG8-5362-000		1	IC, TLP1241, PHOTO-INTERRUPTER	S4 J610
501	XB1-2300-606		AR	SCREW, MACH., TRUSS HEAD, M3X6	
502	XB1-2300-609		AR	SCREW, MACH., TRUSS HEAD, M3X6	
503	XB1-2301-209		2	SCREW, MACH., TRUSS HEAD, M3X12	
504	XB1-2400-609		AR	SCREW, MACH., TRUSS HEAD, M4X6	
505	XB2-7300-606		AR	SCREW, W/WASHER, M3X6	

FIGURE Q20

STACK TRAY DRIVE ASSEMBLY

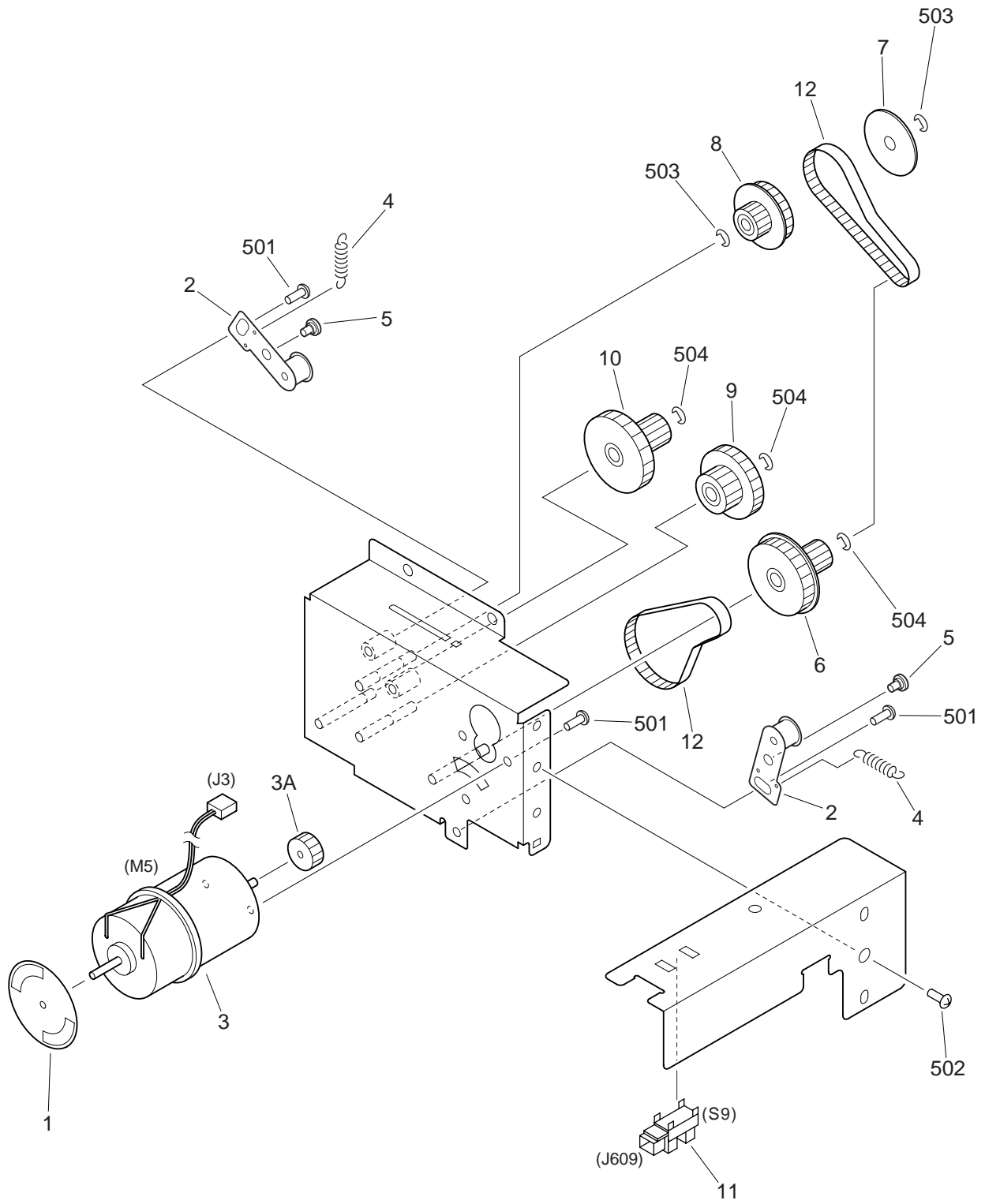
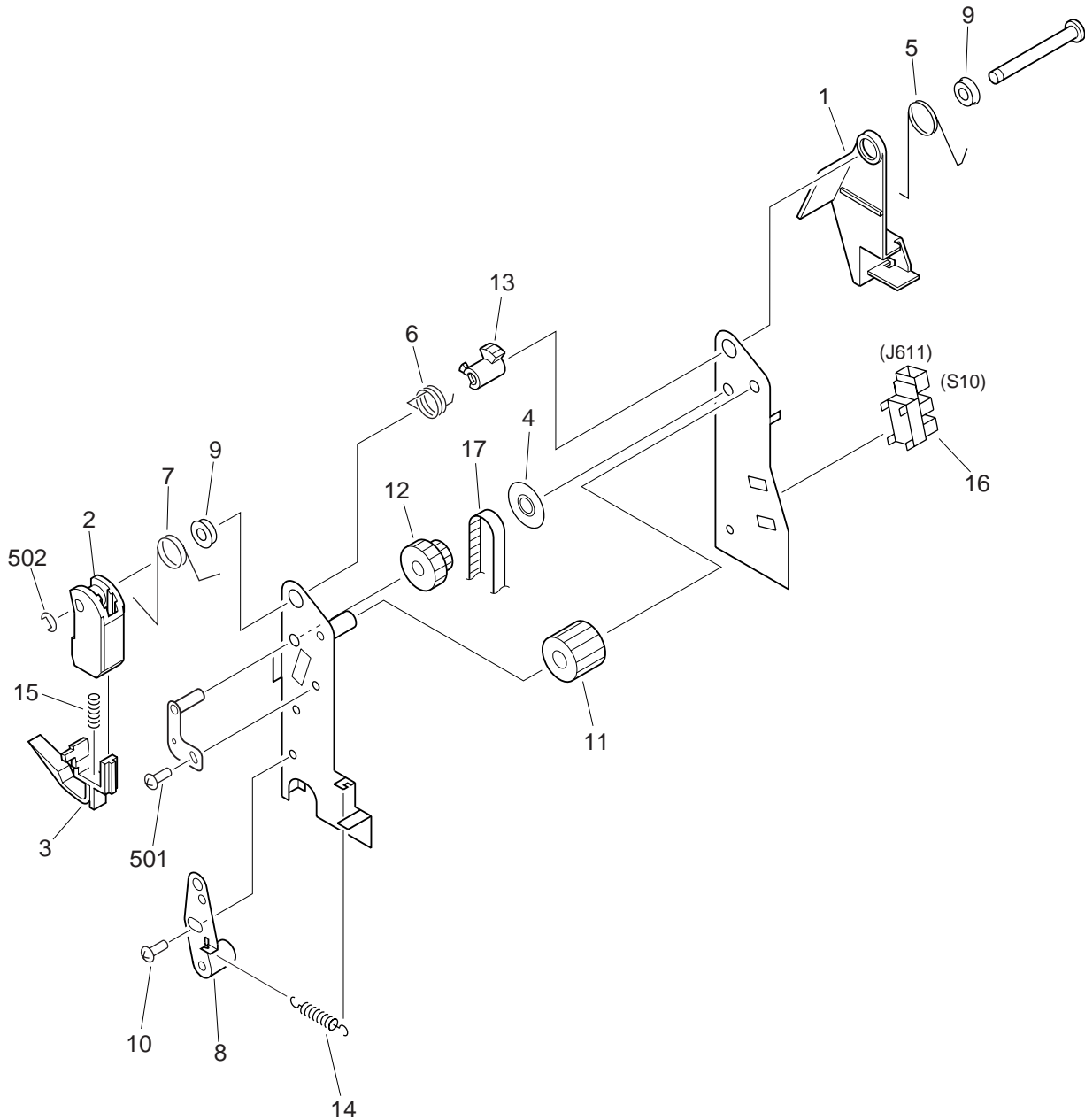


FIGURE & KEY NO.	PART NUMBER	RANK	QTY	DESCRIPTION	SERIAL NUMBER / REMARKS
Q20 -	FG6-3979-000		1	STACK TRAY DRIVE ASSEMBLY	
1	FB5-0669-000		1	PLATE, CLOCK	
2	FF5-9188-000		2	PLATE, TENSION	
3	FF5-9198-000		1	MOTOR, DC 9.9W	M5 J3
3A	FS5-3769-000		1	PULLEY, 20T	
4	FS7-2244-000		2	SPRING, TENSION	
5	FS1-9078-000		2	SCREW, STEPPED, M4	
6	FS5-3766-000		1	PULLEY, 20T/50T	
7	FS5-6714-000		1	FLANGE	
8	FS7-0483-000		1	PULLEY, 40T/GEAR, 15T	
9	FS7-0484-000		1	GEAR, 15T/35T	
10	FS7-0485-000		1	GEAR, 14T/31T	
11	WG8-5362-000		1	IC, TLP1241, PHOTO-INTERRUPTER	S9 J609
12	XF2-1108-040		2	BELT, TIMING	
501	XB6-7300-609		AR	SCREW, TP, M3X6	
502	XB6-7400-609		AR	SCREW, TP, M4X6	
503	XD2-1100-402		2	RING, E	
504	XD2-1100-502		3	RING, E	

FIGURE & KEY NO.	PART NUMBER	R A N K	Q T Y	DESCRIPTION	SERIAL NUMBER / REMARKS
Q30 -	FG6-3971-000		1	OPERATING TRAY ASSEMBLY	
1	FB5-0617-000		1	PLATE, GROUNDING	
2	FB5-0624-000		1	FLAG, PAPER SENSOR	
3	FB5-0625-000		1	SPRING, TORSION	
4	FF5-9182-000		2	PLATE, GUIDE COLLAR ADJUSTING	
5	FS7-2253-000		2	SPRING, TENSION	
6	WG8-5362-000		3	IC, TLP1241, PHOTO-INTERRUPTER	S6,7,8 J502,503,505
7	FG3-0277-000		1	CABLE, ADJUSTMENT MOTOR	J301-303
7A	VS1-5057-006		2	CONNECTOR, SNAP TIGHT	J302,304,303,305
8	FG3-0279-000		1	CABLE, OPERATING TRAY	J501-505
9	FB5-0605-000		1	PLATE, OPERATING TRAY	
10	FB5-0608-000		1	SHAFT, PULLEY	
11	FF5-9196-000		2	BELT, PAPER FEED	
12	FB5-0616-000		1	GUIDE, PAPER	
13	FB5-0627-000		1	LEVER, PAPER SENSOR	
14	FB5-0628-000		1	SPRING, TORSION	
15	FF5-9176-000		1	PLATE, PULLEY, FRONT	
16	FF5-9177-000		1	PLATE, PULLEY, REAR	
17	FS2-1608-000		2	BUSHING	
18	FS5-3767-000		4	PULLEY, 22T	
19	FS5-6712-000		3	FLANGE	
20	FS7-0499-000		1	GEAR, 23T	
21	WG8-5362-000		1	IC, TLP1241, PHOTO-INTERRUPTER	S5 J504
22	FB5-0610-000		1	RACK, ADJUSTMENT, FRONT	
23	FB5-0611-000		1	PLATE, ADJUSTMENT, FRONT	
24	FB5-0612-000		1	SUPPORT, ADJUSTMENT, FRONT	
25	FB5-0618-000		1	SPRING, LEAF	
26	XD9-0117-000		3	RING,E	
27	FB5-0613-000		1	RACK, ADJUSTMENT, REAR	
28	FB5-0614-000		1	PLATE, ADJUSTMENT, REAR	

FIGURE & KEY NO.	PART NUMBER	RANK	QTY	DESCRIPTION	SERIAL NUMBER / REMARKS
Q30 - 29	FB5-0615-000		1	SUPPORT, ADJUSTMENT, REAR	
30	FB5-0633-000		1	PLATE, ADJUSTING, FRONT	
31	FF5-9178-000		1	PLATE, DRIVE, FRONT	
31A	FS5-6717-000		1	FLANGE	
31B	FS7-0500-000		1	GEAR, 18T/48T	
32	FF5-9180-000		1	COLLAR	
33	FH6-1668-000		1	MOTOR, STEPPING, DC 4.8W	M3 J304
34	FS5-6713-000		1	COLLAR	
35	FS5-6716-000		1	FLANGE	
36	FS7-2252-000		3	SPRING, COMPRESSION	
37	FS7-2253-000		1	SPRING, TENSION	
38	FF5-9179-000		1	PLATE, DRIVE, REAR	
38A	FS5-6717-000		1	FLANGE	
38B	FS7-0500-000		1	GEAR, 18T/48T	
39	FF5-9180-000		1	COLLAR	
40	FH6-1668-000		1	MOTOR, STEPPING, DC 4.8W	M4 J305
41	FS5-6713-000		1	COLLAR	
42	FS5-6716-000		1	FLANGE	
43	FS7-2253-000		1	SPRING, TENSION	
44	FB5-0638-000		2	GUIDE, SENSOR FLAG	
45	FS5-6738-000		1	FLANGE	
501	XB1-2300-609		AR	SCREW, MACH., TRUSS HEAD, M3X6	
502	XB1-2300-809		AR	SCREW, MACH., TRUSS HEAD, M3X8	
503	XB4-7300-809		AR	SCREW, TAPPING, TRUSS HEAD, M3X8	
504	XB4-7401-209		AR	SCREW, TAPPING, TRUSS HEAD, M4X12	
505	XB6-7400-609		AR	SCREW, TP, M4X6	
506	XD2-1100-242		AR	RING, E	
507	XD2-1100-322		AR	RING, E	
508	XD2-1100-502		AR	RING, E	

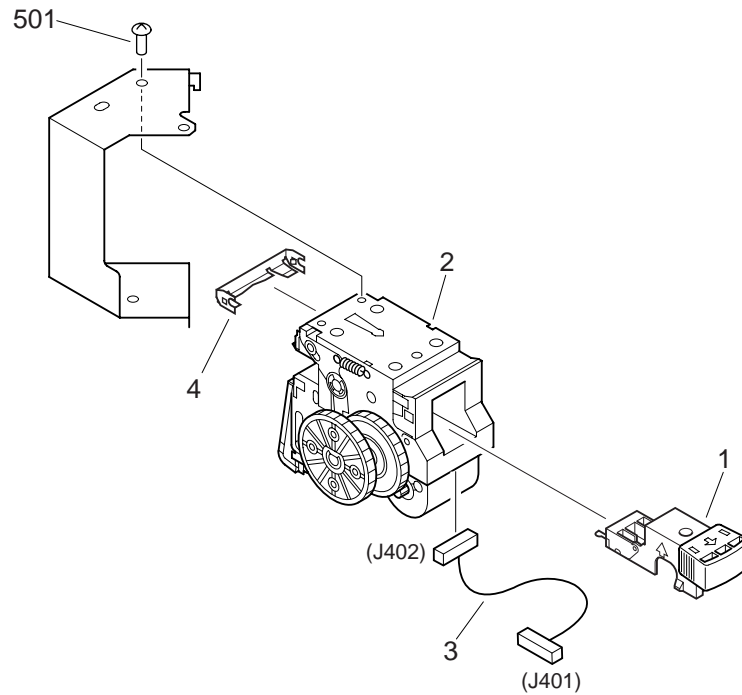
FIGURE Q35 PAPER HEIGHT SENSOR ASSEMBLY



NOTE : This assembly does not include the part shown with key No. 17.

FIGURE & KEY NO.	PART NUMBER	R A N K	Q T Y	DESCRIPTION	SERIAL NUMBER / REMARKS
Q35 -	FG6-3980-000		1	PAPER HEIGHT SENSOR ASSEMBLY	
1	FB5-0687-000		1	FLAG, PAPER SENSOR	
2	FB5-0688-000		1	MOUNT, RETAINING LEVER	
3	FB5-0689-000		1	LEVER, RETAINING	
4	FB5-0691-000		1	FLANGE	
5	FB5-0694-000		1	SPRING, TORSION	
6	FB5-0695-000		1	SPRING, TORSION	
7	FB5-0696-000		1	SPRING, TORSION	
8	FF5-9190-000		1	PLATE, TENSION	
9	FS5-1907-000		2	BUSHING	
10	FS5-9436-000		1	SCREW, MACH., TRUSS HEAD, M4X5	
11	FS7-0488-000		1	GEAR, 28T	
12	FS7-0489-000		1	GEAR, 28T/PULLEY, 15T	
13	FS7-0490-000		1	GEAR, 28T	
14	FS7-2247-000		1	SPRING, TENSION	
15	FS7-2251-000		1	SPRING, COMPRESSION	
16	WG8-5362-000		1	IC, TLP1241, PHOTO-INTERRUPTER	S10 J611
17	XF2-1123-740		1	BELT, TIMING	SEE NOTE
501	XB1-2300-609		1	SCREW, MACH., TRUSS HEAD, M3X6	
502	XD2-1100-202		1	RING, E	

FIGURE Q40 STAPLE ASSEMBLY



NOTE : This assembly does not include the part shown with key No. 3.

FIGURE & KEY NO.	PART NUMBER	RANK	QTY	DESCRIPTION	SERIAL NUMBER / REMARKS
Q40 -	FG6-3982-000		1	STAPLE ASSEMBLY	
1	FB5-0724-000		1	STAPLE CARTRIDGE	
2	FB5-0725-000		1	STAPLE UNIT	M6 J402
3	FG3-0278-000		1	CABLE, STAPLE CONNECTING	SEE NOTE J401,402
4	FB5-0727-000		1	PLATE, GUIDE	
501	XB1-2300-609		AR	SCREW,MACH.,TRUSS HEAD,M3X6	

FIGURE QB LIST OF CONNECTORS

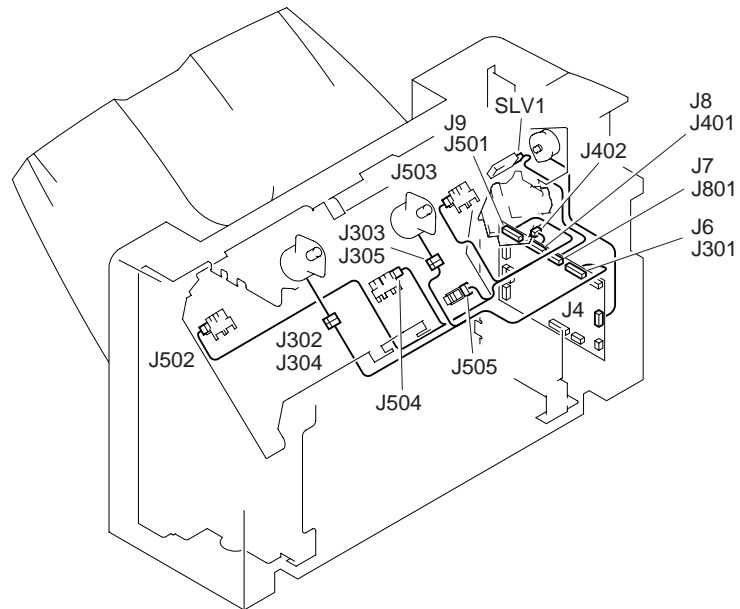
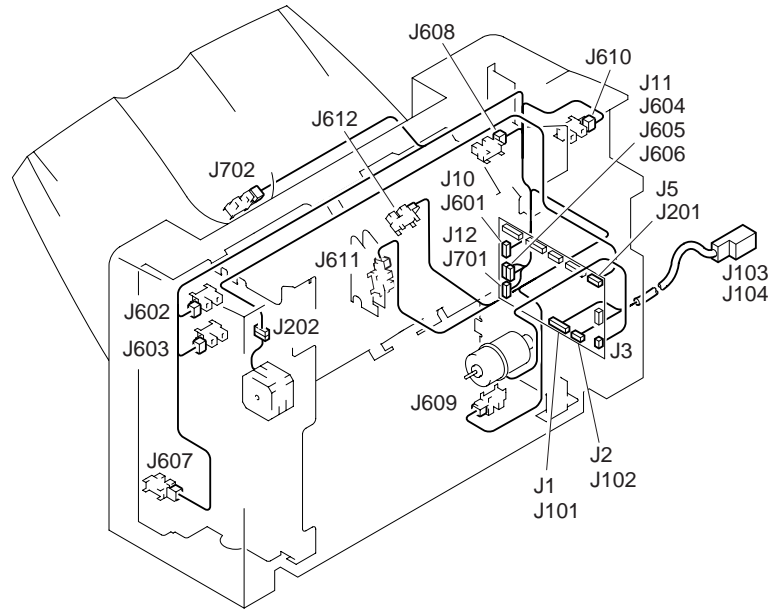


FIGURE & KEY NO.	PART NUMBER	RANK	QTY	DESCRIPTION	SERIAL NUMBER / REMARKS
Q B -	NPN		RF	LIST OF CONNECTORS	
J1	PCB			DC CONTROLLER	
	VS3-5080-007		1	CONNECTOR, 7P, FEMALE	
	WT1-5155-000		6	TERMINAL	
J2	PCB			DC CONTROLLER	
	VS3-5083-002		1	CONNECTOR, 2P, FEMALE	
	WS3-5160-000		2	SOCKET CONTACT, 18-24AWG	
J3	NPN			STACK TRAY UP/DOWN MOTOR	M5
	PCB			DC CONTROLLER	
J4	NPN			DELIVERY MOTOR	M1
	PCB			DC CONTROLLER	
J5	PCB			DC CONTROLLER	
	VS1-0279-006		1	CONNECTOR, 6P, FEMALE	
	WT1-0240-000		6	SOCKET CONTACT, 20-26AWG	
J6	PCB			DC CONTROLLER	
	VS1-0842-012		1	CONNECTOR, 12P, FEMALE	
J7	PCB			DC CONTROLLER	
	VS1-5083-002		1	CONNECTOR, 2P, FEMALE	
J8	PCB			DC CONTROLLER	
	VS1-5824-013		1	CONNECTOR, 13P, FEMALE	
	WS3-5358-000		13	SOCKET CONTACT, 22-26AWG	
J9	PCB			DC CONTROLLER	
	VS1-6313-012		1	CONNECTOR, 12P, FEMALE	
J10	PCB			DC CONTROLLER	
	VS1-0842-006		1	CONNECTOR, 6P, FEMALE	
J11	PCB			DC CONTROLLER	
	VS9-5009-018		1	HOLDER, CONNECTOR, 18P	
J12	PCB			DC CONTROLLER	
	VS1-0842-003		1	CONNECTOR, 3P, FEMALE	
J101	PCB			DC CONTROLLER	

FIGURE & KEY NO.	PART NUMBER	R A N K	Q T Y	DESCRIPTION	SERIAL NUMBER / REMARKS
Q B - J101	VS3-5080-007		1	CONNECTOR, 7P, FEMALE	
	WT1-5155-000		6	TERMINAL	
J102	PCB			DC CONTROLLER	
	VS3-5083-002		1	CONNECTOR, 2P, FEMALE	
	WS3-5160-000		2	SOCKET CONTACT, 18-24AWG	
J103	FH2-6481-000		1	HOUSING	
	VS3-5080-007		1	CONNECTOR, 7P, FEMALE	
	WT1-5155-000		6	TERMINAL	
J104	-----			TO COPIER	
	FH2-6481-000		1	HOUSING	
J201	WS3-5044-000		3	SOCKET, CONTACT, 18-24AWG	
	PCB			DC CONTROLLER	
	VS1-0279-006		1	CONNECTOR, 6P, FEMALE	
	WT1-0240-000		6	SOCKET CONTACT, 20-26AWG	
J202	NPN			PAPER OPERATING MOTOR	M2
J301	VS1-0280-006		1	CONNECTOR, 6P, MALE	
	WS3-1057-000		6	PIN CONTACT, 20-22AWG	
	PCB			DC CONTROLLER	
	VS1-0842-012		1	CONNECTOR, 12P, FEMALE	
J302	VS1-0842-006		1	CONNECTOR, 6P, FEMALE	
J303	VS1-5057-006		1	CONNECTOR, SNAP TIGHT	
	VS1-0842-006		1	CONNECTOR, 6P, FEMALE	
	VS1-5057-006		1	CONNECTOR, SNAP TIGHT	
J304	NPN			FRONT ADJUSTMENT MOTOR	M3
	VS1-5057-006		1	CONNECTOR, SNAP TIGHT	
J305	NPN			REAR ADJUSTMENT MOTOR	M4
	VS1-5057-006		1	CONNECTOR, SNAP TIGHT	
J401	PCB			DC CONTROLLER	
	VS1-5824-013		1	CONNECTOR, 13P, FEMALE	
	WS3-5358-000		13	SOCKET CONTACT, 22-26AWG	

FIGURE & KEY NO.	PART NUMBER	RANK	QTY	DESCRIPTION	SERIAL NUMBER / REMARKS
Q B - J402	NPN			STAPLE UNIT	M6
	VS1-5824-013		1	CONNECTOR, 13P, FEMALE	
	WS3-5358-000		13	SOCKET CONTACT, 22-26AWG	
	J501	PCB		DC CONTROLLER	
	VS1-6313-012		1	CONNECTOR, 12P, FEMALE	
J502	NPN			FRONT ADJUSTMENT HP SENSOR	S6
	VS1-6321-003		1	CONNECTOR, 3P, FEMALE	
J503	NPN			REAR ADJUSTMENT HP SENSOR	S7
	VS1-6321-003		1	CONNECTOR, 3P, FEMALE	
J504	NPN			OPERATING TRAY PAPER SENSOR	S5
	VS1-6321-003		1	CONNECTOR, 3P, FEMALE	
J505	NPN			PAPER FEEDER HP SENSOR	S8
	VS1-6321-003		1	CONNECTOR, 3P, FEMALE	
J601	PCB			DC CONTROLLER	
	VS1-0842-006		1	CONNECTOR, 6P, FEMALE	
J602	NPN			DELIVERY MOTOR CLOCK SENSOR	S1
	VS1-0842-003		1	CONNECTOR, 3P, FEMALE	
J603	NPN			RETURN ROLLER HP SENSOR	S3
	VS1-0842-003		1	CONNECTOR, 3P, FEMALE	
J604	VS1-0842-009		1	CONNECTOR, 9P, FEMALE	
J605	VS9-5009-018		1	HOLDER, CONNECTOR, 18P	
	VS1-0852-009		1	CONNECTOR, 9P, FEMALE	
	VS9-5009-018		1	HOLDER, CONNECTOR, 18P	
J606	PCB			DC CONTROLLER	
	VS9-5009-018		1	HOLDER, CONNECTOR, 18P	
J607	NPN			STACK TRAY LOWER LIMIT SENSOR	S12
	VS1-0842-003		1	CONNECTOR, 3P, FEMALE	
J608	NPN			STACK TRAY UPPER LIMIT SENSOR	S13
	VS1-0842-003		1	CONNECTOR, 3P, FEMALE	
J609	NPN			STACK TRAY UP/DOWN SENSOR	S9

FIGURE & KEY NO.	PART NUMBER	RANK	QTY	DESCRIPTION	SERIAL NUMBER / REMARKS
Q B - J609	VS1-0842-003		1	CONNECTOR, 3P, FEMALE	
J610	NPN			JOINT SENSOR	S4
	VS1-0842-003		1	CONNECTOR, 3P, FEMALE	
J611	NPN			STACK TRAY PAPER HEIGHT SENSOR	S10
	VS1-0842-003		1	CONNECTOR, 3P, FEMALE	
J612	NPN			INLET SENSOR	S2
	VS1-0842-003		1	CONNECTOR, 3P, FEMALE	
J701	PCB			DC CONTROLLER	
	VS1-0842-003		1	CONNECTOR, 3P, FEMALE	
J702	NPN			STACK TRAY PAPER SENSOR	S11
J801	VS1-0842-003		1	CONNECTOR, 3P, FEMALE	
	PCB			DC CONTROLLER	
	VS1-5083-002		1	CONNECTOR, 2P, FEMALE	
SLV1	NPN			STAPLE SAFETY SWITCH	S14
	WS3-5649-000		1	CONNECTOR, 29, FEMALE	
	WT1-0183-000		2	SOCKET CONTACT, 22-26AWG	

QD NUMERICAL INDEX

PART NUMBER	FIGURE & KEY NO.	PART NUMBER	FIGURE & KEY NO.	PART NUMBER	FIGURE & KEY NO.
FA5 - 4471 - 000	Q10 - 21	FF5 - 9173 - 000	Q12 - 5	FS7 - 2242 - 000	Q10 - 13
FA6 - 8379 - 000	Q10 - 19	FF5 - 9176 - 000	Q30 - 15	FS7 - 2243 - 000	Q12 - 23
FB1 - 9860 - 000	Q12 - 16	FF5 - 9177 - 000	Q30 - 16		Q12 - 28
	Q12 - 20	FF5 - 9178 - 000	Q30 - 31	FS7 - 2244 - 000	Q20 - 4
	Q12 - 25	FF5 - 9179 - 000	Q30 - 38	FS7 - 2245 - 000	Q13 - 11
FB4 - 6261 - 000	Q11 - 19	FF5 - 9180 - 000	Q30 - 32	FS7 - 2246 - 000	Q10 - 17
FB5 - 0577 - 000	Q10 - 1		Q30 - 39	FS7 - 2247 - 000	Q35 - 14
FB5 - 0582 - 000	Q10 - 2	FF5 - 9182 - 000	Q30 - 4	FS7 - 2251 - 000	Q35 - 15
FB5 - 0583 - 000	Q10 - 3	FF5 - 9183 - 000	Q12 - 19	FS7 - 2252 - 000	Q30 - 36
FB5 - 0584 - 000	Q12 - 1	FF5 - 9185 - 000	Q10 - 9	FS7 - 2253 - 000	Q30 - 5
FB5 - 0585 - 000	Q12 - 2	FF5 - 9186 - 000	Q10 - 10		Q30 - 37
FB5 - 0586 - 000	Q12 - 3	FF5 - 9188 - 000	Q20 - 2		Q30 - 43
FB5 - 0589 - 000	Q12 - 4	FF5 - 9190 - 000	Q35 - 8	FS7 - 2254 - 000	Q12 - 36
FB5 - 0590 - 000	Q12 - 17	FF5 - 9192 - 000	Q11 - 4	FS7 - 2255 - 000	Q12 - 13
FB5 - 0593 - 000	Q10 - 15	FF5 - 9193 - 000	Q11 - 3	FS7 - 2256 - 000	Q12 - 14
FB5 - 0594 - 000	Q10 - 16	FF5 - 9195 - 000	Q11 - 15	FS7 - 2257 - 000	Q12 - 44
FB5 - 0595 - 000	Q11 - 9	FF5 - 9196 - 000	Q30 - 11	PCB	Q B - J 1
FB5 - 0596 - 000	Q11 - 10	FF5 - 9198 - 000	Q20 - 3		Q B - J 2
FB5 - 0598 - 000	Q11 - 11	FF5 - 9200 - 000	Q11 - 1		Q B - J 3
FB5 - 0600 - 000	Q10 - 4	FF5 - 9201 - 000	Q12 - 46		Q B - J 4
FB5 - 0601 - 000	Q10 - 5	FF5 - 9202 - 000	Q12 - 47		Q B - J 5
FB5 - 0605 - 000	Q30 - 9	FG3 - 0274 - 000	Q13 - 5		Q B - J 6
FB5 - 0608 - 000	Q30 - 10	FG3 - 0275 - 000	Q11 - 2		Q B - J 7
FB5 - 0610 - 000	Q30 - 22	FG3 - 0276 - 000	Q13 - 6		Q B - J 8
FB5 - 0611 - 000	Q30 - 23	FG3 - 0277 - 000	Q30 - 7		Q B - J 9
FB5 - 0612 - 000	Q30 - 24	FG3 - 0278 - 000	Q40 - 3		Q B - J 10
FB5 - 0613 - 000	Q30 - 27	FG3 - 0279 - 000	Q30 - 8		Q B - J 11
FB5 - 0614 - 000	Q30 - 28	FG3 - 0280 - 000	Q13 - 7		Q B - J 12
FB5 - 0615 - 000	Q30 - 29	FG3 - 0281 - 000	Q10 - 22		Q B - J101
FB5 - 0616 - 000	Q30 - 12	FG3 - 0282 - 000	Q13 - 8		Q B - J102
FB5 - 0617 - 000	Q30 - 1	FG6 - 3971 - 000	Q30 -		Q B - J201
FB5 - 0618 - 000	Q30 - 25	FG6 - 3979 - 000	Q20 -		Q B - J301
FB5 - 0624 - 000	Q30 - 2	FG6 - 3980 - 000	Q35 -		Q B - J401
FB5 - 0625 - 000	Q30 - 3	FG6 - 3982 - 000	Q40 -		Q B - J501
FB5 - 0627 - 000	Q30 - 13	FH2 - 6481 - 000	Q B - J103		Q B - J601
FB5 - 0628 - 000	Q30 - 14		Q B - J104		Q B - J606
FB5 - 0633 - 000	Q30 - 30	FH6 - 1667 - 000	Q13 - 2		Q B - J701
FB5 - 0638 - 000	Q30 - 44	FH6 - 1668 - 000	Q30 - 33		Q B - J801
FB5 - 0650 - 000	Q12 - 32		Q30 - 40	RS1 - 1054 - 000	Q12 - 6
FB5 - 0651 - 000	Q12 - 33	FH6 - 1669 - 000	Q13 - 3	VS1 - 0279 - 006	Q B - J 5
FB5 - 0652 - 000	Q12 - 30	FS1 - 9078 - 000	Q20 - 5		Q B - J201
FB5 - 0653 - 000	Q12 - 31	FS1 - 9121 - 000	Q13 - 13	VS1 - 0280 - 006	Q B - J202
FB5 - 0654 - 000	Q12 - 15	FS1 - 9167 - 000	Q12 - 21	VS1 - 0842 - 003	Q B - J 12
	Q12 - 34		Q12 - 26		Q B - J602
FB5 - 0655 - 000	Q10 - 25	FS1 - 9168 - 000	Q01 - 7		Q B - J603
FB5 - 0658 - 000	Q10 - 11	FS2 - 0145 - 000	Q12 - 7		Q B - J607
FB5 - 0659 - 000	Q10 - 12	FS2 - 1608 - 000	Q12 - 8		Q B - J608
FB5 - 0662 - 000	Q10 - 20		Q30 - 17		Q B - J609
FB5 - 0669 - 000	Q20 - 1	FS2 - 3488 - 000	Q12 - 9		Q B - J610
FB5 - 0675 - 000	Q10 - 6	FS2 - 9461 - 000	Q13 - 10		Q B - J611
FB5 - 0684 - 000	Q11 - 16	FS5 - 1907 - 000	Q35 - 9		Q B - J612
FB5 - 0687 - 000	Q35 - 1	FS5 - 3764 - 000	Q12 - 22		Q B - J701
FB5 - 0688 - 000	Q35 - 2		Q12 - 27		Q B - J702
FB5 - 0689 - 000	Q35 - 3		Q12 - 41	VS1 - 0842 - 006	Q B - J 10
FB5 - 0691 - 000	Q35 - 4	FS5 - 3765 - 000	Q12 - 42		Q B - J302
FB5 - 0694 - 000	Q35 - 5	FS5 - 3766 - 000	Q20 - 6		Q B - J303
FB5 - 0695 - 000	Q35 - 6	FS5 - 3767 - 000	Q30 - 18		Q B - J601
FB5 - 0696 - 000	Q35 - 7	FS5 - 3768 - 000	Q12 - 35	VS1 - 0842 - 009	Q B - J604
FB5 - 0697 - 000	Q11 - 12	FS5 - 3769 - 000	Q20 - 3A	VS1 - 0842 - 012	Q B - J 6
FB5 - 0698 - 000	Q11 - 13	FS5 - 6709 - 000	Q12 - 12		Q B - J301
FB5 - 0699 - 000	Q11 - 14		Q12 - 45	VS1 - 0852 - 009	Q B - J605
FB5 - 0701 - 000	Q10 - 7	FS5 - 6712 - 000	Q30 - 19	VS1 - 5057 - 006	Q B - J302
FB5 - 0702 - 000	Q10 - 8	FS5 - 6713 - 000	Q30 - 34		Q B - J303
FB5 - 0703 - 000	Q10 - 23		Q30 - 41		Q B - J304
FB5 - 0704 - 000	Q10 - 24	FS5 - 6714 - 000	Q20 - 7		Q B - J305
FB5 - 0722 - 000	Q13 - 9	FS5 - 6716 - 000	Q30 - 35		Q30 - 7A
FB5 - 0724 - 000	Q40 - 1		Q30 - 42	VS1 - 5083 - 002	Q B - J 7
FB5 - 0725 - 000	Q40 - 2	FS5 - 6717 - 000	Q30 - 31A		Q B - J801
FB5 - 0727 - 000	Q40 - 4		Q30 - 38A	VS1 - 5824 - 013	Q B - J 8
FB5 - 0729 - 000	Q12 - 18	FS5 - 6738 - 000	Q30 - 45		Q B - J401
FB5 - 0730 - 000	Q12 - 37	FS5 - 9436 - 000	Q35 - 10		Q B - J402
FB5 - 0731 - 000	Q12 - 38	FS5 - 9597 - 000	Q11 - 18	VS1 - 6313 - 012	Q B - J 9
FB5 - 0735 - 000	Q11 - 1A	FS7 - 0483 - 000	Q20 - 8		Q B - J501
	Q11 - 4A	FS7 - 0484 - 000	Q20 - 9	VS1 - 6321 - 003	Q B - J502
FB5 - 0736 - 000	Q11 - 5	FS7 - 0485 - 000	Q20 - 10		Q B - J503
FB5 - 0738 - 000	Q11 - 6	FS7 - 0486 - 000	Q12 - 40		Q B - J504
FB5 - 0740 - 000	Q13 - 1	FS7 - 0487 - 000	Q12 - 10		Q B - J505
FB5 - 0745 - 000	Q01 - 1	FS7 - 0488 - 000	Q35 - 11	VS3 - 5080 - 007	Q B - J 1
FB5 - 0752 - 000	Q01 - 2	FS7 - 0489 - 000	Q35 - 12		Q B - J101
FB5 - 0753 - 000	Q01 - 3	FS7 - 0490 - 000	Q35 - 13		Q B - J103
FB5 - 0754 - 000	Q01 - 4	FS7 - 0499 - 000	Q12 - 39	VS3 - 5083 - 002	Q B - J 2
FB5 - 0755 - 000	Q01 - 5		Q30 - 20		Q B - J102
FB5 - 0756 - 000	Q01 - 6	FS7 - 0500 - 000	Q30 - 31B	VS9 - 5009 - 018	Q B - J 11
FE9 - 0018 - 000	Q11 - 7		Q30 - 38B		Q B - J604
FF3 - 3664 - 000	Q11 - 17	FS7 - 2241 - 000	Q12 - 11		Q B - J605

PART NUMBER	FIGURE & KEY NO.	PART NUMBER	FIGURE & KEY NO.	PART NUMBER	FIGURE & KEY NO.
VS9 - 5009 - 018	Q B - J606				
WC4 - 5030 - 000	Q13 - 12				
WG8 - 5362 - 000	Q10 - 14				
	Q11 - 8				
	Q13 - 4				
	Q13 - 14				
	Q20 - 11				
	Q30 - 6				
	Q30 - 21				
	Q35 - 16				
WS3 - 1057 - 000	Q B - J202				
WS3 - 5044 - 000	Q B - J104				
WS3 - 5160 - 000	Q B - J 2				
	Q B - J102				
WS3 - 5358 - 000	Q B - J 8				
	Q B - J401				
	Q B - J402				
WS3 - 5649 - 000	Q B - SLV1				
WT1 - 0183 - 000	Q B - SLV1				
WT1 - 0240 - 000	Q B - J 5				
	Q B - J201				
WT1 - 5155 - 000	Q B - J 1				
	Q B - J101				
	Q B - J103				
XB1 - 2300 - 606	Q11 - 501				
	Q13 - 501				
XB1 - 2300 - 607	Q12 - 513				
XB1 - 2300 - 609	Q13 - 502				
	Q30 - 501				
	Q35 - 501				
	Q40 - 501				
XB1 - 2300 - 809	Q30 - 502				
XB1 - 2301 - 209	Q13 - 503				
XB1 - 2400 - 409	Q12 - 504				
XB1 - 2400 - 606	Q01 - 501				
	Q10 - 501				
	Q12 - 501				
XB1 - 2400 - 609	Q12 - 502				
	Q13 - 504				
XB1 - 2401 - 609	Q11 - 502				
XB1 - 2402 - 009	Q01 - 504				
XB1 - 2402 - 509	Q01 - 502				
XB1 - 3300 - 806	Q11 - 503				
XB2 - 7300 - 606	Q10 - 502				
	Q13 - 505				
XB2 - 7400 - 606	Q10 - 503				
	Q11 - 504				
XB4 - 7300 - 809	Q10 - 504				
	Q30 - 503				
XB4 - 7400 - 809	Q10 - 505				
XB4 - 7401 - 009	Q01 - 503				
XB4 - 7401 - 209	Q10 - 506				
	Q11 - 505				
	Q30 - 504				
XB6 - 7300 - 609	Q12 - 503				
	Q20 - 501				
XB6 - 7400 - 409	Q11 - 506				
XB6 - 7400 - 609	Q11 - 507				
	Q20 - 502				
	Q30 - 505				
XD1 - 1104 - 135	Q12 - 505				
XD1 - 1106 - 239	Q12 - 512				
XD2 - 1100 - 202	Q35 - 502				
XD2 - 1100 - 242	Q10 - 507				
	Q30 - 506				
XD2 - 1100 - 322	Q12 - 506				
	Q30 - 507				
XD2 - 1100 - 402	Q20 - 503				
XD2 - 1100 - 502	Q12 - 507				
	Q20 - 504				
	Q30 - 508				
XD2 - 1100 - 642	Q12 - 508				
XD3 - 2160 - 102	Q12 - 509				
XD3 - 2200 - 102	Q12 - 510				
XD3 - 2200 - 142	Q12 - 511				
XD9 - 0117 - 000	Q10 - 18				
	Q30 - 26				
XF2 - 1108 - 040	Q20 - 12				
XF2 - 1123 - 740	Q35 - 17				
XF2 - 1318 - 860	Q12 - 24				
	Q12 - 29				
XF9 - 0423 - 000	Q12 - 43				

Prepared by
OFFICE IMAGING PRODUCTS TECHNICAL SUPPORT DIV.
CANON INC.
Printed in Japan

REVISION 0 [FEB. 1999]

5-1, Hakusan 7-chome, Toride-shi, Ibaraki 302-8501, Japan

Canon